

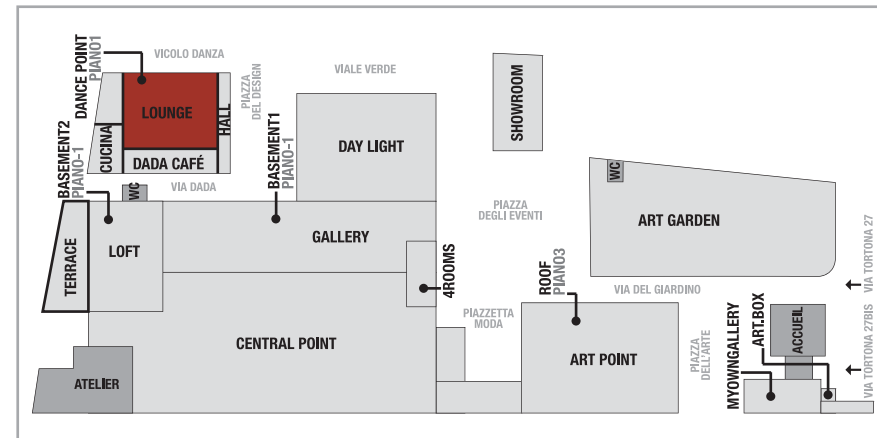
# SUPERSTUDIO PIU'



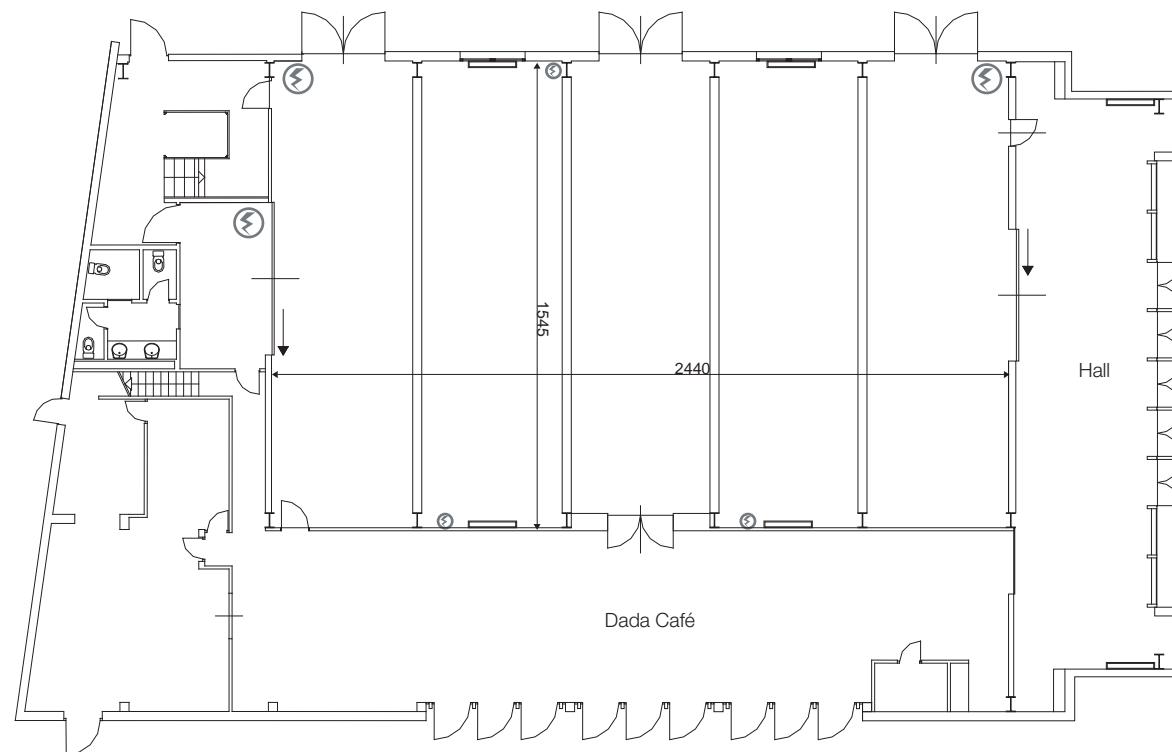
## LOUNGE

Inside a new and independent building, made up of crystal and white cement, is a spectacular, elegant and cosy hall, about 375 sqmt. (plus 80 sqmt. hall), with a light wooden floor and two wide windows on the right side which can be darkened.

It is the perfect place for gala dinners, small presentations and private parties. A big door gives access to Dada Cafe, Superstudiopiù's bar and restaurant. There is also a big glass entrance hall.



Scala 1:250



### DIMENSIONS

Area: 375 m<sup>2</sup> + Hall 80 m<sup>2</sup>  
Dimensions: 24,40 x 15,45 m

Height max : 4,95 m  
Height underbeam : 4,45 m

### ELECTRICITY

- 1 x 400 ampere
- 1 x 125 ampere
- 1 x 63 ampere
- 5 x 32 ampere
- 6 x 16 ampere

### NOTES

- Heating/air-conditioning
- Toilets: 3
- Audio connection
- Catering room on request
- Lan/wireless

Due to the wooden floor delicacy, any project or installation is to be approved by Superstudio Direction of Production